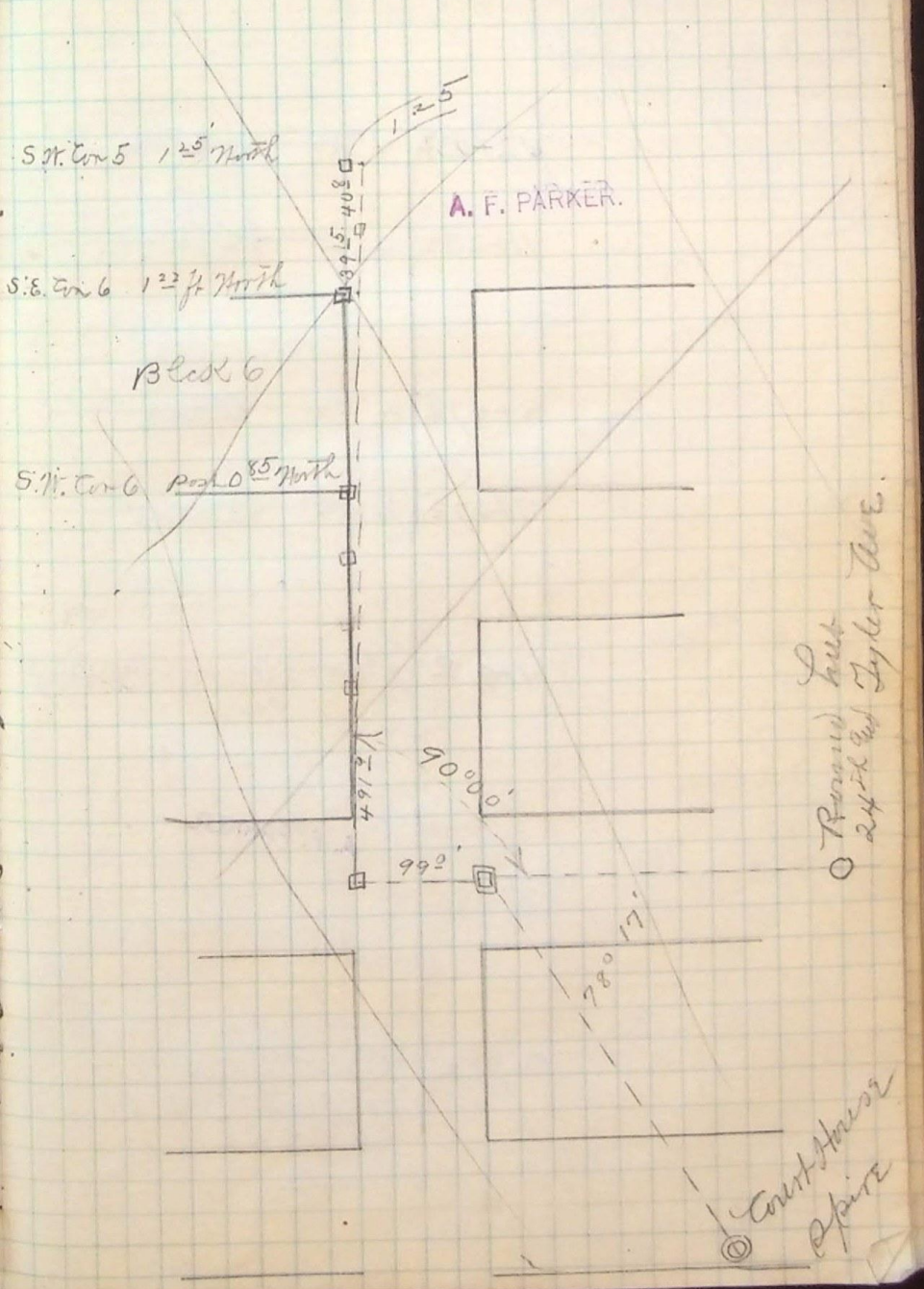


See North page



A. F. PARKER.

S.W. Cor 5 125 North

S.E. Cor 6 123 ft North

Block 6

S.W. Cor 6 Road 85 North

39.5'
40.2'

491.2'

90° 00'

990'

78° 17'

Road built
24th and Tyler Ave.

⊙ Court House
⊙ Spire